



The easiest way to start flying.

## SiFly E

### A thrill for the whole family.

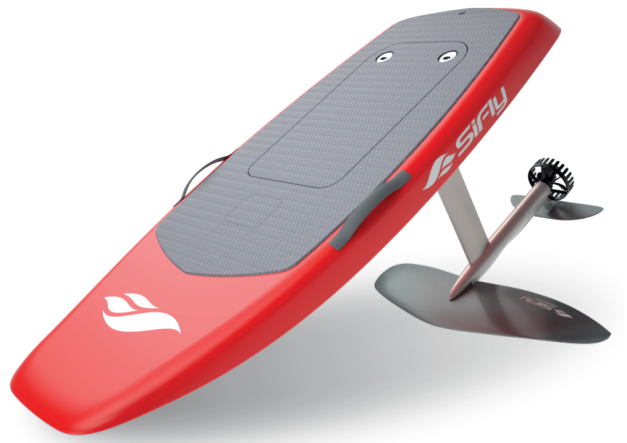
Rider weight range: 60 - 160 kg

Volume: 170 l

Size: 190 cm

#### Beginner to Intermediate

The biggest board in our range offers the lowest planing speed and the highest volume on the market, making it perfect for beginners and heavier riders. Eye-catching and portable, the SiFly E will make you stand out from the crowd on any family holiday. Stable and versatile, the SiFly E provides a safe and thrilling riding experience. Efoiling is now an adventure any family member can embark on.



## SiFly R

### The sweet-spot of electric hydrofoils.

Rider weight range: 40 - 140 kg

Volume: 120 l

Size: 171 cm

#### Intermediate to Advanced

Our midsize board offers the ultimate balance between usability, versatility, and performance. The SiFly R is designed to inspire confidence in newer riders, encouraging them to execute tighter turns and reach higher speeds. Stable, yet extremely agile, the SiFly R delivers a controlled and sporty ride in any conditions. Experience freedom.



## SiFly S

### The ultimate carving machine.

Rider weight range: 30 - 100 kg

Volume: 98 l

Size: 161 cm

#### Advanced to Pro

Our smallest board is designed to deliver an aggressive and sporty ride. Carve harder, fly higher, foil faster. The SiFly S provides unprecedented performance and control, transforming you into the pro-surfer you always wished to be. From the calmest lake to the roughest sea, the SiFly S makes no compromises and pushes the limits of watersports. Dare to fly.



## SiFly Rider

### Accessible Performance

Rider weight range: 40 - 110 kg

Volume: 110 l & 130 l

Size: 161 cm & 171 cm

#### Intermediate to Pro

The SiFly Rider comes in two sizes and is the choice for all surfers looking for a versatile and accessible eFoil. The compact outline allows for aggressive carving, while the closed-cell foam construction ensures it retains optimal buoyancy. The shock-absorbing soft deck provides a safe and forgiving ride, yet is rigid enough to allow you to control the board with ease. Unlock new possibilities.



# Our Values

## Progressive

We set no limits on precision and efficiency in the race to provide the ultimate balance between quality, athletic performance, and value.

## Accessible

From the biggest board to the specially curved wings, SiFly offers the most user-friendly eFoil on the market.

## Versatile

Our product portfolio includes a wide range of boards, masts, and wings, suitable for beginners and professionals alike.

## Innovative

We offer the most advanced software on the market, including features like GPS tracking and visualisation, session timers, and more.

## Reliable

SiFly provides timely deliveries and reliable service around the globe. We are always here for you.

# Commercial Benefits

## Opportunity for collaboration

SiFly offers unique business partnerships for aquatic centers and schools, yacht charters, hotels, commercial partners, and sailing clubs.

## Great return of investment

SiFly boards offer the best price-to-performance ratio on the market, which ensures you get maximum return with the lowest investment.

## Be different

SiFly boards are bold and engaging and will grab people's attention with their bright designs. The thrilling experience they provide will guarantee that your customers will always return for more.

## Beat your competitors

SiFly offers the easiest board for teaching, the most stable wingset and the most advanced commercially-oriented software on the market. This ensures easier lessons for both your instructors and students, control over your assets, and high customer satisfaction.

## Flexible payment options

SiFly offers different payment methods — product discounts, leasing & financing, deferred payments, as well as revenue-sharing.

## Control your assets

SiFly offers the most advanced commercial software with special functions:

- Safety power limits
- Session timers for easier rental operations
- Cloud based monitoring of usage, GPS tracking, and settings
- SIM card and WiFi connectivity for seamless syncing
- Geofencing (*coming soon*)





